

Protecting Safety from extreme events

ASECAP 2026

John Milton, PhD, PE, RSP_{2IB}, PTOE

Director of Transportation Safety

March 9, 2026

Unstable slope stability program



SR 20 Mudslide



Rock Scaling

Storm recovery



US 2 near Skykomish (milepost 50-64)



US 12 at Naches



SR 410
near
Enumclaw

Storm and Repair



US 2 Road Failure River Flooding

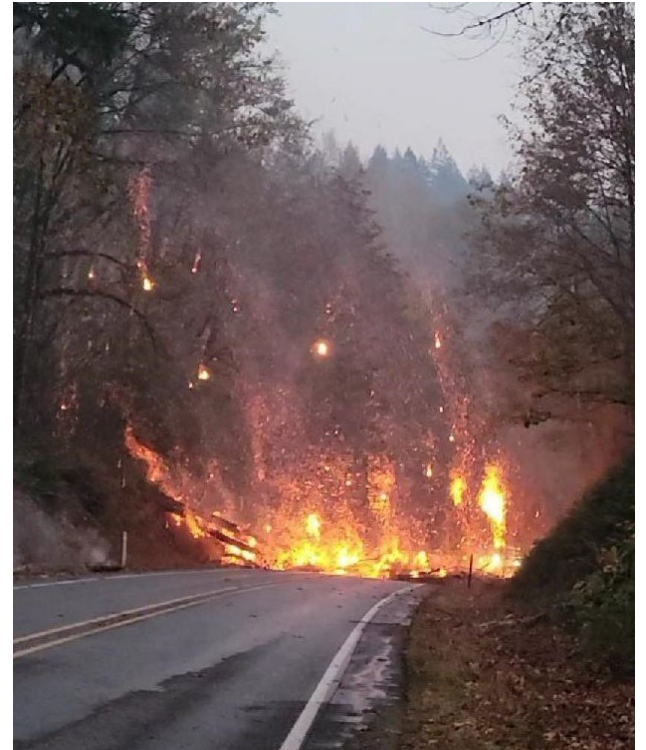


US 2 Repair

Risk and resiliency assessment



SR 410 Multiday Lane Closure



Wildfire road closure

Planning for the future

Population growth

- 3 - 4 million more people expected in the Cascadia megaregion by 2050

Transportation needs

- Modernize existing infrastructure and create new travel options with greater regional connectivity
- Maintaining our region's economic competitiveness requires investments in a future transportation system
- More extreme weather and seismic risk requires holistic and integrated planning for a resilient system



Thank you

John Milton, PhD, PE

Director of Transportation Safety

John.milton@wsdot.wa.gov