

4th ASECAP SUSTAINABILITY FORUM

15 December 2025
Rome, Italy



Hosted by



Organized by



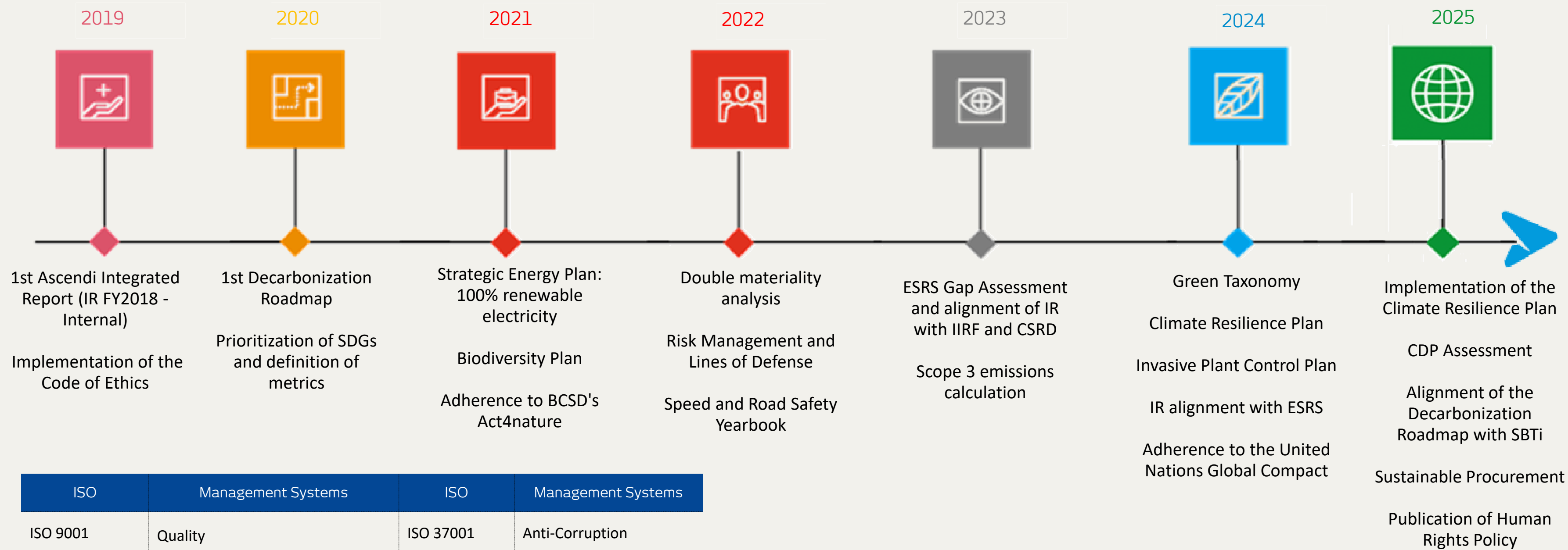


ADD PRESENTATION TITLE

ASCENDI'S CLIMATE RESILIENCE PLAN

Sílvia Guerra
Ascendi
Head of Sustainability
sguerra@ascendi.pt

+ 25 years building sustainable value



ISO	Management Systems	ISO	Management Systems
ISO 9001	Quality	ISO 37001	Anti-Corruption
ISO 14001	Environmental	ISO 55001	Asset Management
ISO 45001	Occupational Health and Safety	ISO 27001	Information Security
ISO 27701	Information Privacy	ISO 39001	Road Safety
BREEAM In-Use	Headquarters Building		

GRESB



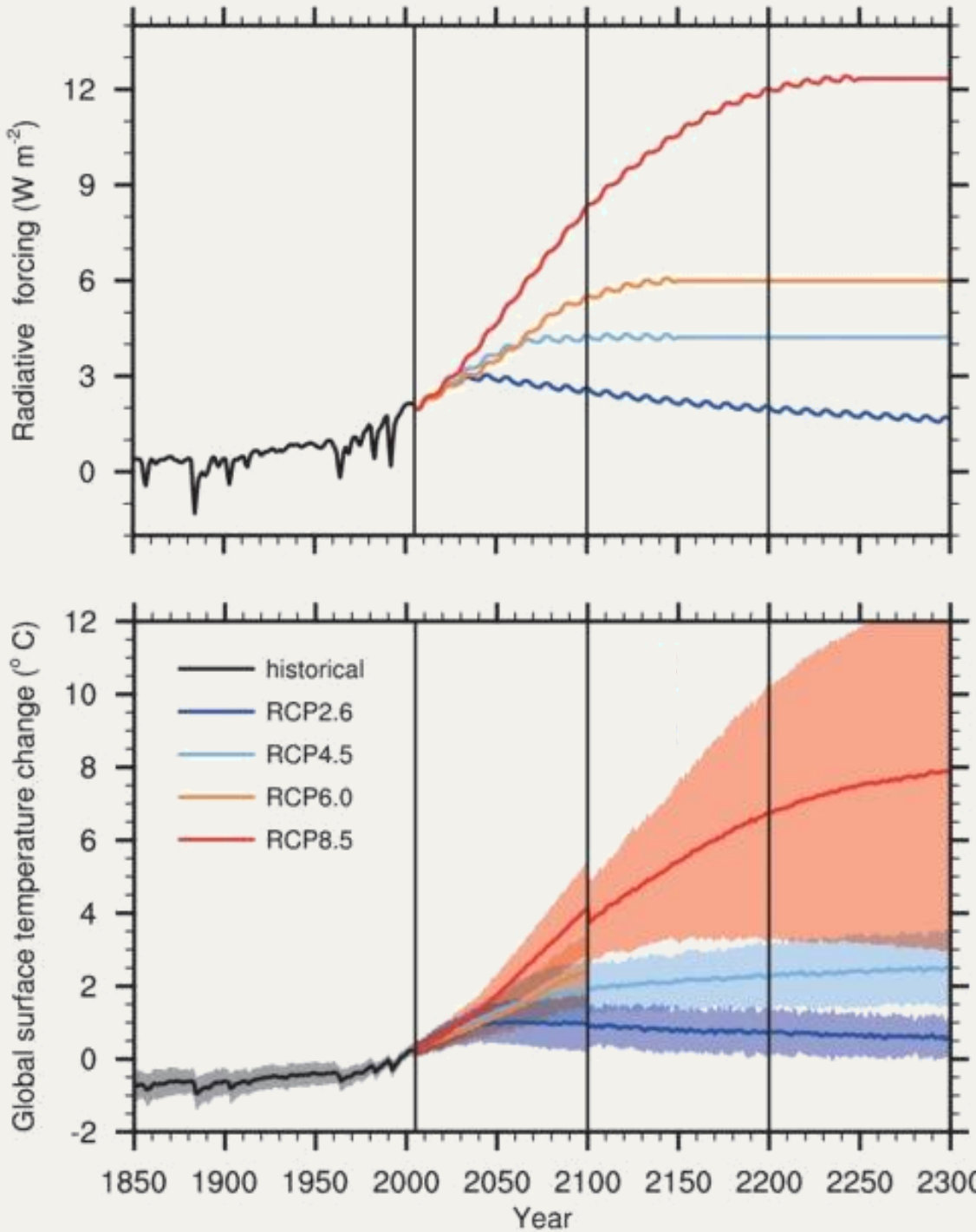


Short-term future climate period:

RCP8.5


Representative Concentration Pathways (RCPs)

Climate scenario reflecting the most severe impacts



historical
RCP2.6
RCP4.5
RCP6.0
RCP8.5

Quantitative Assessment




Physical Risks

These result from the direct (negative) impacts of climate change on assets:

- Floods
- Wildfires
- ...


Qualitative Assessment



Transition Risks

These result from actions associated with the transition to a low-carbon economy:

- Introduction of new climate policies
- low-carbon technologies
- ...



Opportunities

Positive impacts resulting from climate change:

- Renewable energy
- Energy efficiency
- ...

Risk assessment - Physical risks

Risk = Impact Magnitude × Probability

Probability of occurrence of the climate event

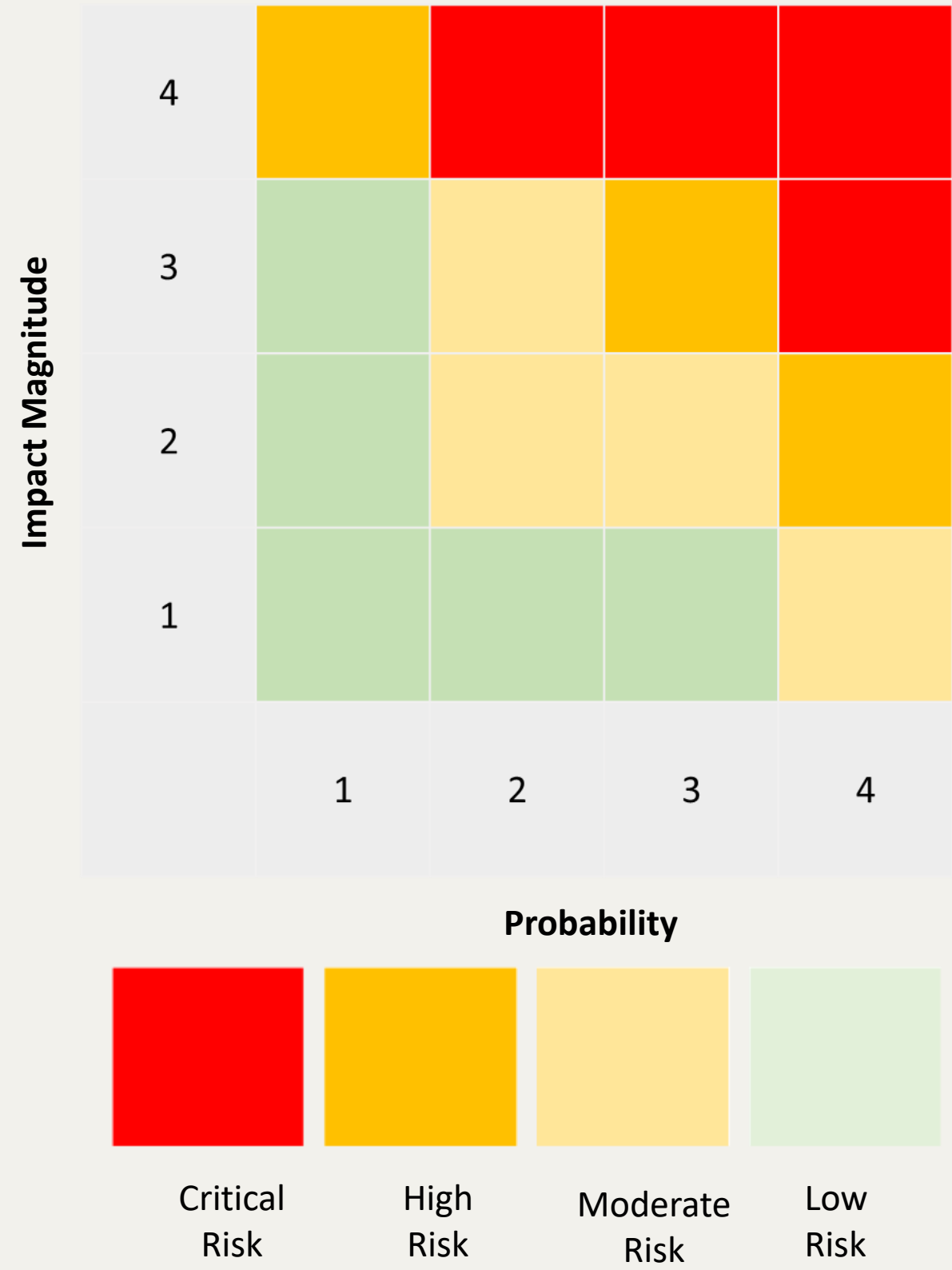
Depending on:

Duration of disruption – Assets affected by climate risk and damage caused

&

Monetary cost – Associated with the duration of service and equipment disruption, material losses and repair costs

If the Average Daily Traffic of heavy vehicles exceeds 15% of total daily traffic in a given subsection, the magnitude rating increases by one level

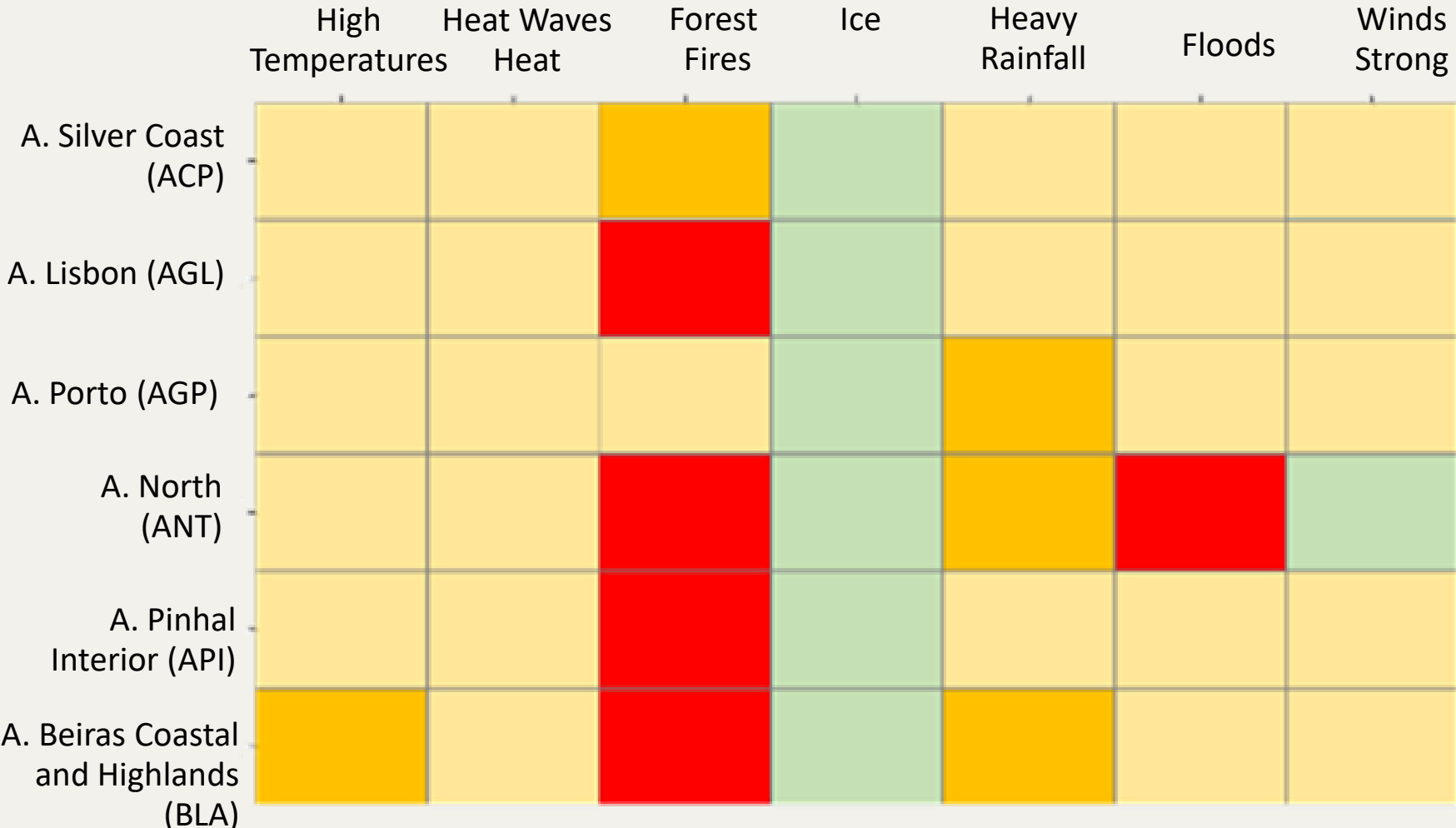
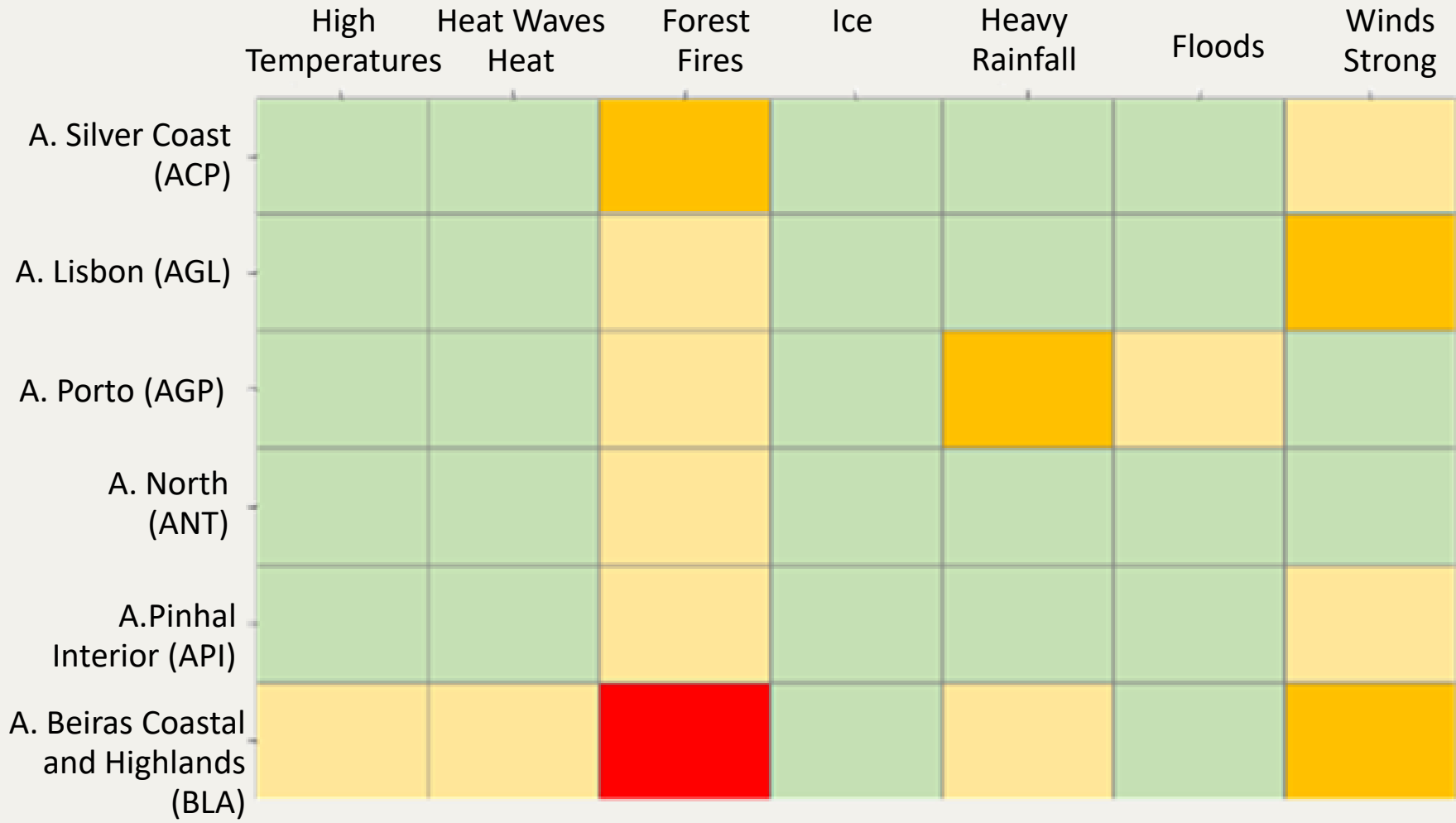


The climate resilience plan is one of the pillars of our strategy

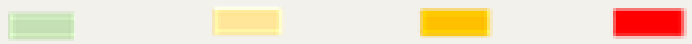


Current Climate Risks

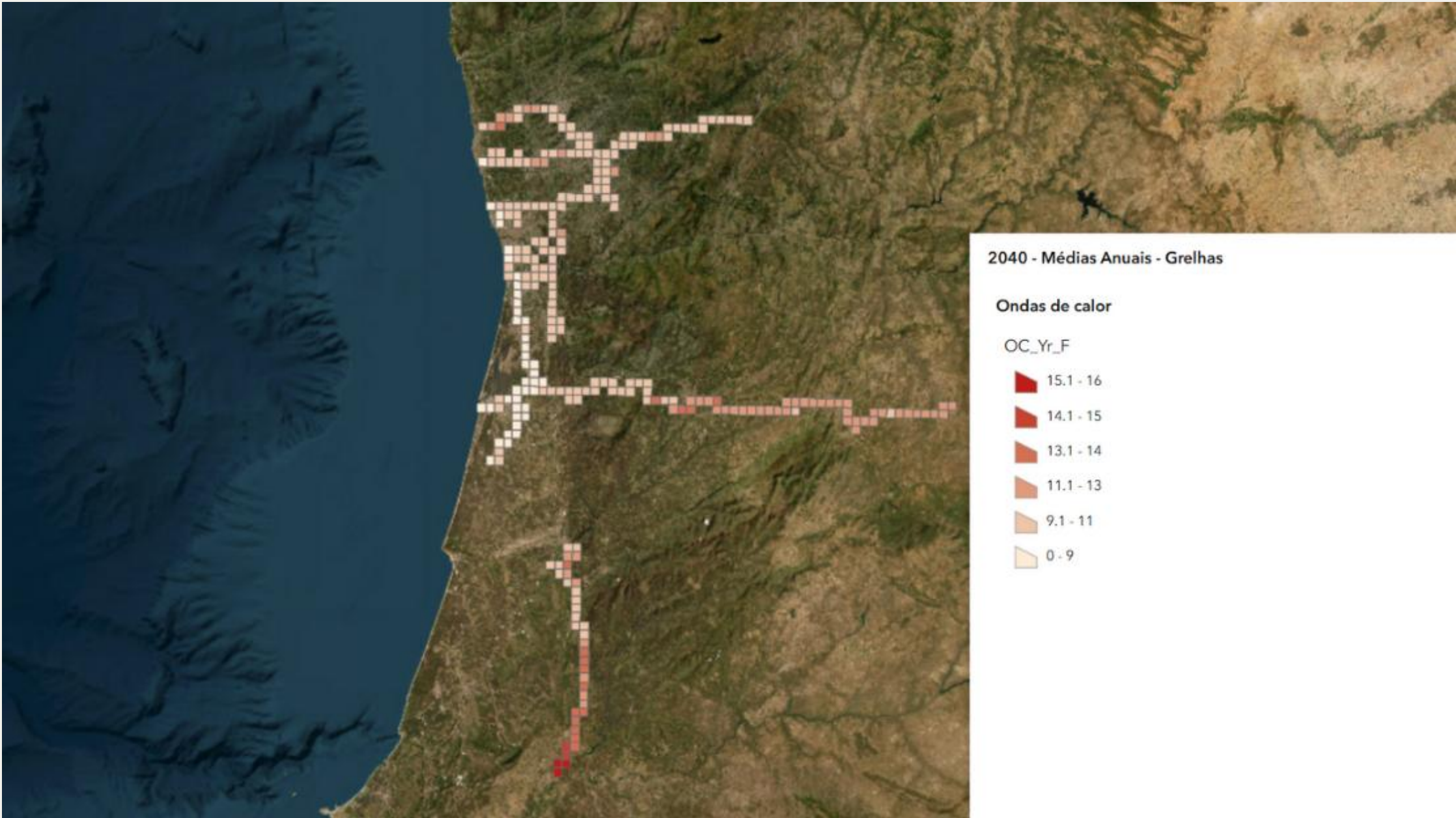
Future Climate Risks



Risk Level: Low; Moderate; High; Critical



Vulnerability assessment with a granularity of 3 km by 3 km



Increase in temperature and associated parameters



Increase in the number of days with very intense precipitation

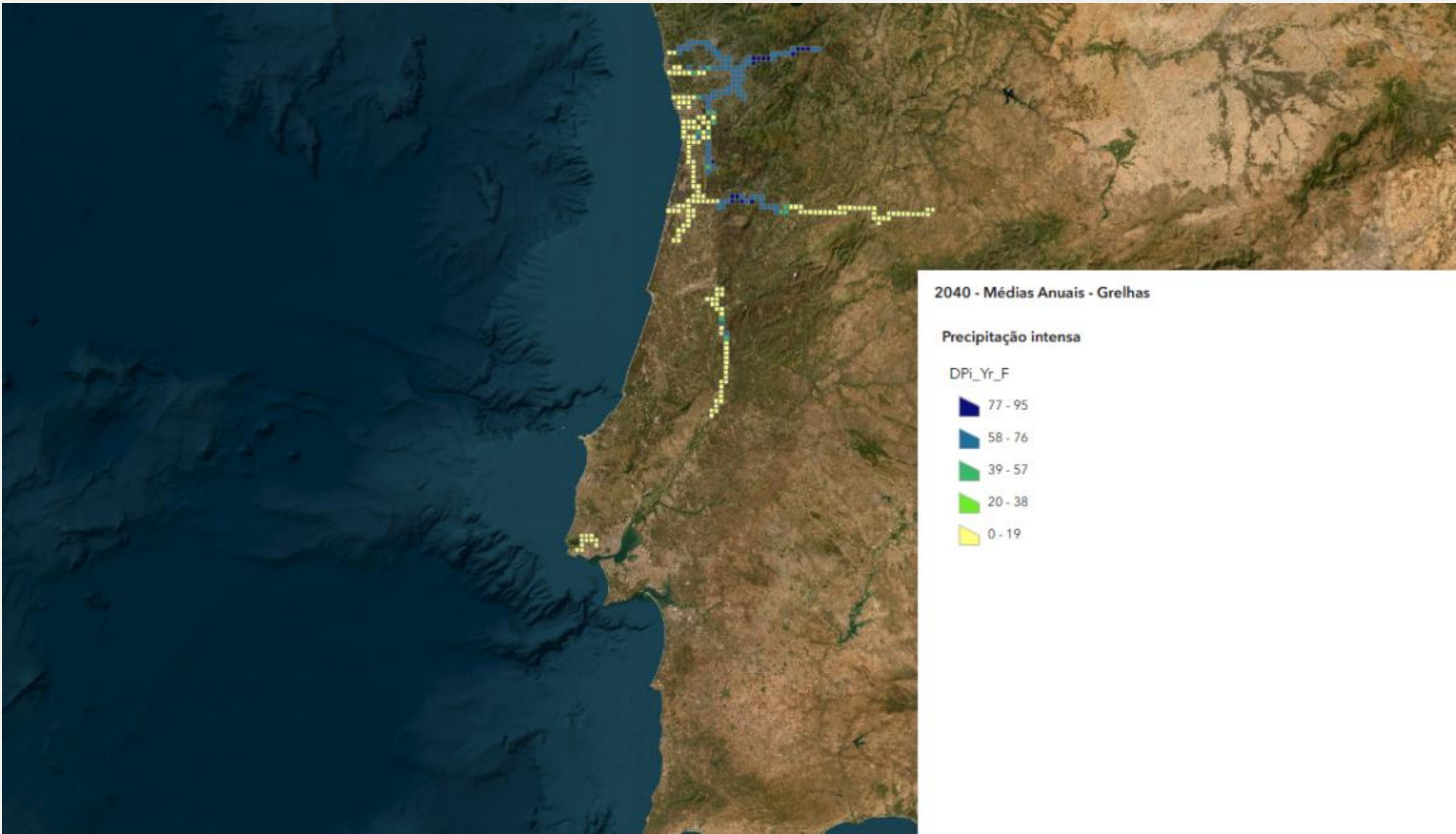


Increase in the number of days with a high forest fire risk index



Increase in the number of days with strong winds

Vulnerability assessment with a granularity of 3 km by 3 km



Increase in temperature and associated parameters



Increase in the number of days with very intense precipitation

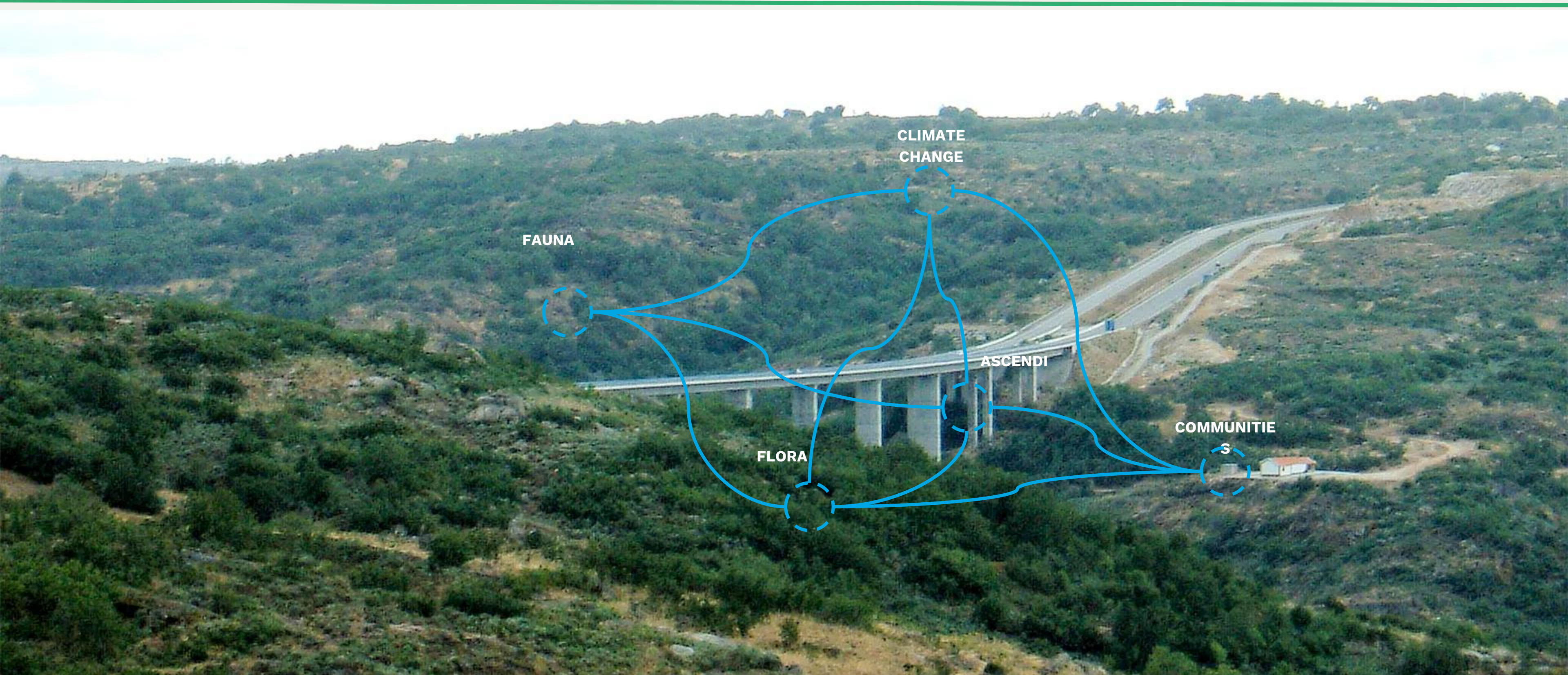


Increase in the number of days with a high forest fire risk index



Increase in the number of days with strong winds

Impact on operations, teams, users, communities, and natural ecosystems



Mitigation and Adaptation Measures of the Climate Resilience Plan



Measure 1



Prioritize Resilient Materials

- **Performance requirements:** define the characteristics of materials to withstand high temperatures and establish resilient design strategies
- **Evaluate materials:** prioritize options that are resilient to temperature variations and incorporate recycled materials

Execution	2
Implementation	Long term
Financial Effort	4

Measure 2



Early User Alerts

- **Sensors and Real-Time Monitoring:** use AI/IoT for early detection
- **User notification:** integration with navigation platforms and other alert systems
- **Emergency response:** ensure effective coordination with official entities in critical situations

Execution	2
Implementation	Short term
Financial effort	1

Measure 3



Monitor Drainage Systems

- **Integrate advanced monitoring technologies:** use AI/IoT systems to track water levels in real time
- **Strengthen inspection and maintenance:** inspection and cleaning routines for the drainage system at points with the highest risk of heavy rainfall

Execution	2
Implementation	Medium term
Financial Effort	3

Legend: 1 to 4



Measure 4



Forest Management

- **Minimize the risk of forest fires:** automatically send daily fire risk alerts, allowing for adjustments to be made to operational planning
- **Road safety:** measures to reduce the risk of falling trees
- **Adhere to Predictive Fire Evolution Models**

Execution	3
Implementation	Medium term
Financial Effort	2



Measure 5



Wind Protection

- **Assess effects on assets and safety:** check structural integrity and signage condition
- **Technological solutions:** Install real-time monitoring sensors to detect wind variations and support alerts and operational adjustments

Execution	2
Implementation	Short term
Financial effort	1



Measure 6



Decarbonization

- **Efficient lighting:** replacement of existing lighting with LED systems
- **Renewable electricity:** use of renewable electricity sources
- **Own fleet:** transition to electric or low-emission vehicles in operation and maintenance activities

Execution	3
Implementation	Short term
Financial Effort	2

Legend: 1 to 4

Mitigation and Adaptation Measures of the Climate Resilience Plan



Measure 7



Maintenance Plans 4.0

- **Adjusted maintenance plans:** considering climate risks
- **Team safety:** schedules adapted to extreme heat, adequate hydration, and correct use of PPE
- **Emergency response:** preparing teams for extreme events

Execution	2
Implementation	Short term
Financial Effort	2



Measure 8



Climate Risk GIS Platform

- **Georeferenced record of affected infrastructure:** precise location, supporting analysis and response
- **Climate monitoring:** continuous monitoring of extreme events
- **Team training:** to improve risk identification and management

Execution	3
Implementation	Short term
Financial Effort	2



Measure 9



Vulnerability Monitoring

- **Continuous monitoring of vulnerabilities:** ongoing assessment of vulnerability to climate risks
- **Development of Dashboards:** constant assessment of climate exposures and risks

Execution	2
Implementation	Short term
Financial Effort	2

Legend: 1 to 4

Mitigation and Adaptation Measures of the Climate Resilience Plan



Measure 7



Maintenance Plans 4.0

- **Adjusted maintenance plans:** considering climate risks
- **Team safety:** schedules adapted to extreme heat, adequate hydration, and correct use of PPE
- **Emergency response:** preparing teams for extreme events

Execution	2
Implementation	Short term
Financial Effort	2



Measure 8



Climate Risk GIS Platform

- **Georeferenced record of affected infrastructure:** precise location, supporting analysis and response
- **Climate monitoring:** continuous monitoring of extreme events
- **Team training:** to improve risk identification and management

Execution	3
Implementation	Short term
Financial Effort	2



Measure 9



Vulnerability Monitoring

- **Continuous monitoring of vulnerabilities:** ongoing assessment of vulnerability to climate risks
- **Development of Dashboards:** constant assessment of climate exposures and risks

Execution	2
Implementation	Short term
Financial Effort	2

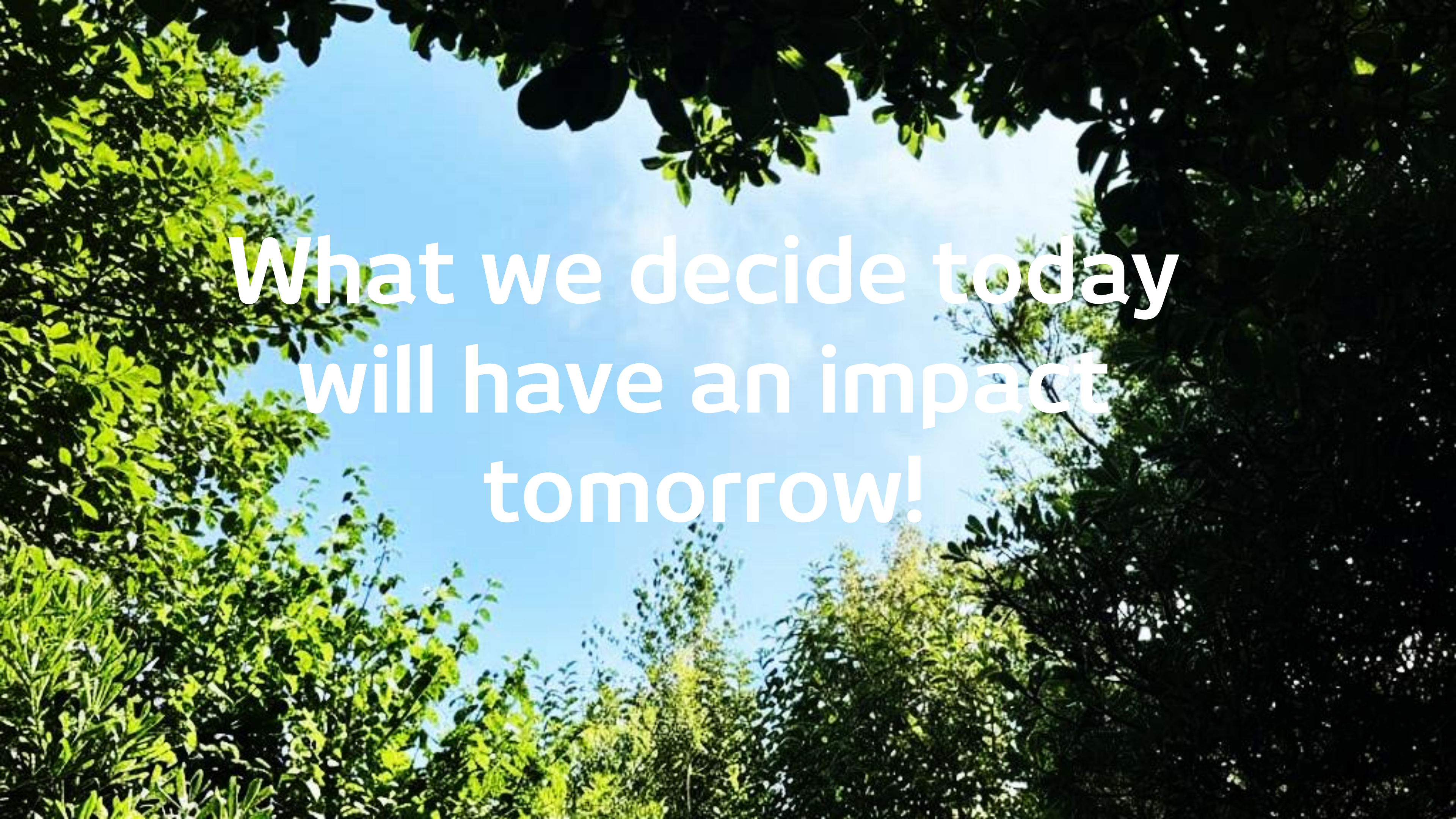
Legend: 1 to 4

01 / Climate resilience is a strategic priority, essential to ensuring operational continuity, safety and sustainability of transport infrastructure

02 / Investing (today) in adaptation and mitigation reduces future costs, prevents operational losses and strengthens long-term competitiveness

03 / Action reinforces leadership – it demonstrates strong climate governance and commitment, positioning Ascendi as an active agent in the transition

Ascendi's Climate Resilience Plan is not just a response to risk, it is a strategic opportunity for innovation, efficiency and sustainable leadership.



**What we decide today
will have an impact
tomorrow!**

THANK YOU

Organized by



Hosted by



4th ASECAP SUSTAINABILITY FORUM