

## **New constructions and redevelopments – ASFINAG sets out for a clear mission for future tasks**

Since 25 October 2007 the then newly appointed Management Board members of ASFINAG, Alois Schedl and Klaus Schierhackl, have intensively worked on new constructions and redevelopments inside ASFINAG. Following the slogan „Our mission: satisfied customers – our target: 100 % reliability“ ASFINAG structures have been optimized in order to be up to the mark of meeting technical, operational and economical requirements of nowadays traffic and road business as far as the speedy expansion of primary road constructions is concerned.



**Alois Schedl and Klaus Schierhackl**

ASFINAG wishes to be a reliable partner for all customers and for the Republic of Austria, ensuring efficient activities and handling in the three core areas of operation, construction and tolling. Similar jobs were clustered, core competences synergetically allocated and responsibilities well defined. This was mastered with a structural adjustment which was implemented in the first half of 2008.

Both Management Board members say unisono: “This means that synergy potentials between group companies have been exploited by means of an intensified cooperation and the practical application of central competences.”

In the field of construction ASFINAG’s overall aim was the integration of all construction projects of the primary roads network into one subsidiary, both as regards new large-scale projects and construction work on existing roads. In line with the strategic keynote “centrally steered – locally implemented” essential targets of the core area of construction have been realised.

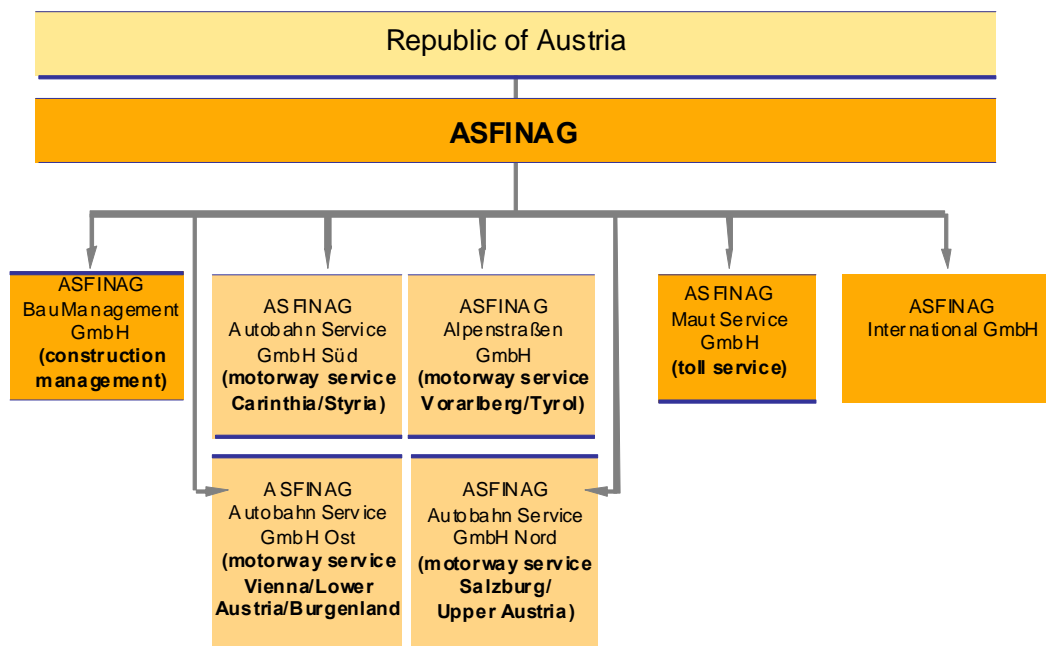
In the area of tolling ASFINAG Maut Service GmbH (MSG) successfully integrated all core processes which in turn permit stable and high quality daily activities. New services to be launched as well as current operations are executed according to well defined schedules with proven interfaces. Programmes to increase efficiency and reduce costs have successfully been implemented. The organisational separation of development and operation proved successful in tolling and will be maintained.

MSG envisages the future structural adjustment to be generally directed at the integration of three service areas so far handled by other companies, i.e. technical services as, for instance, the development and maintenance of telecommunication services, of infrastructure and sectional operation standards so far in the competence of the holding company, furthermore TNS (Telematics Networks and Service), responsible also for system maintenance and so far handled by Verkehrstelematik GmbH, and, finally, Lakeside research group who in the past regularly worked for MSG and Verkehrstelematik GmbH.

The integration of a business branch in which significant growth can be expected in the near and medium term – telematics services – should soon be reflected in noteworthy synergies.

„Nearly 2700 people are bearing these responsibilities, aims and mission with us. Our staff is our most important capital when dealing with modern requirements to our three core areas operation, construction and tolling”, both Management Board member state clearly.

# ASFINAG Corporate Structure



Website: [www.asfinag.at](http://www.asfinag.at)