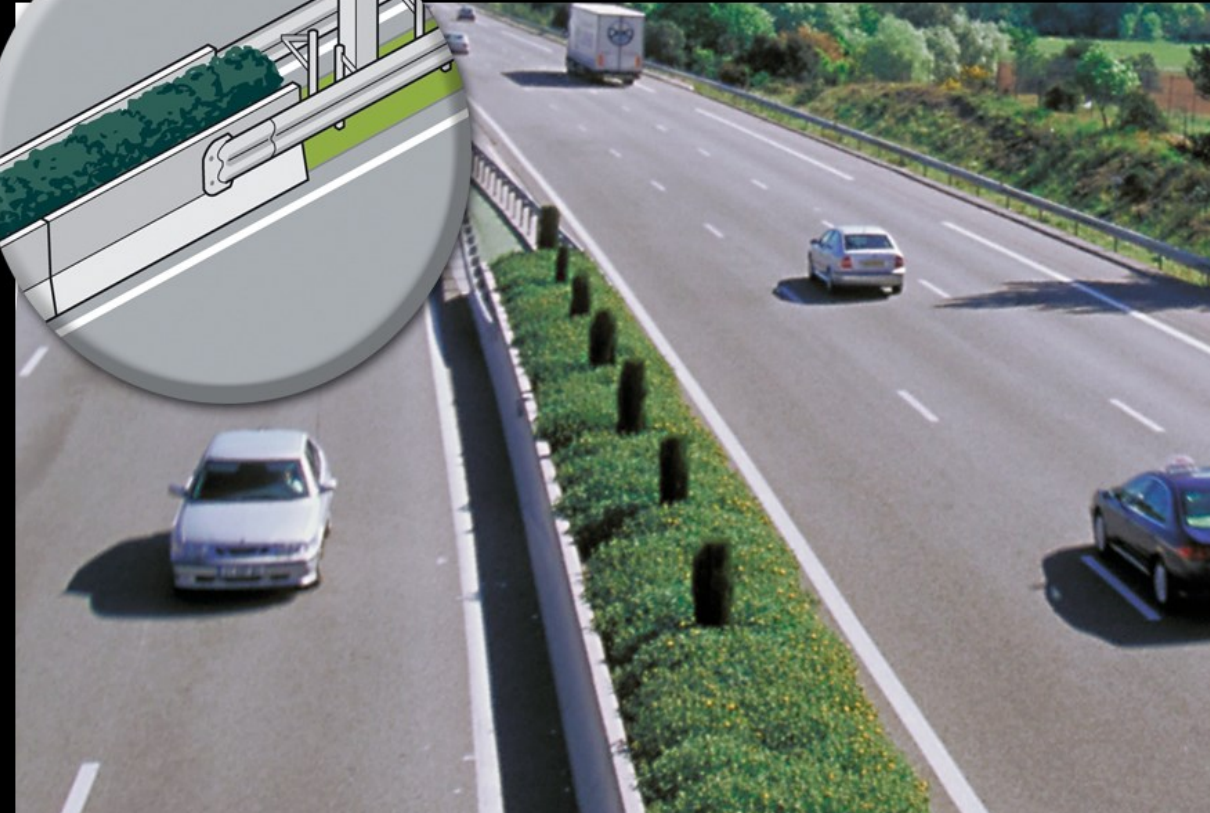
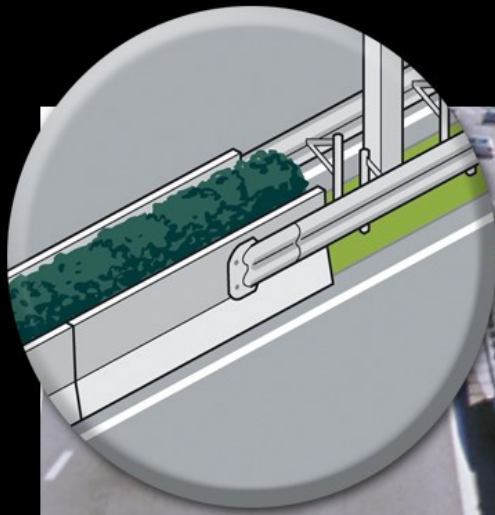




# ROAD SAFETY TOP PRIORITY OF TOLL MOTORWAY COMPANIES





A motorway is designed to reduce the risks :

- Dual carriageways for the two directions of traffic flows
- Lay-bys or appropriate parking zones for emergency stop
- No intersection
- Guardrails.....

....

# fatality rate 2001 – 2016

↘ - 64,11%

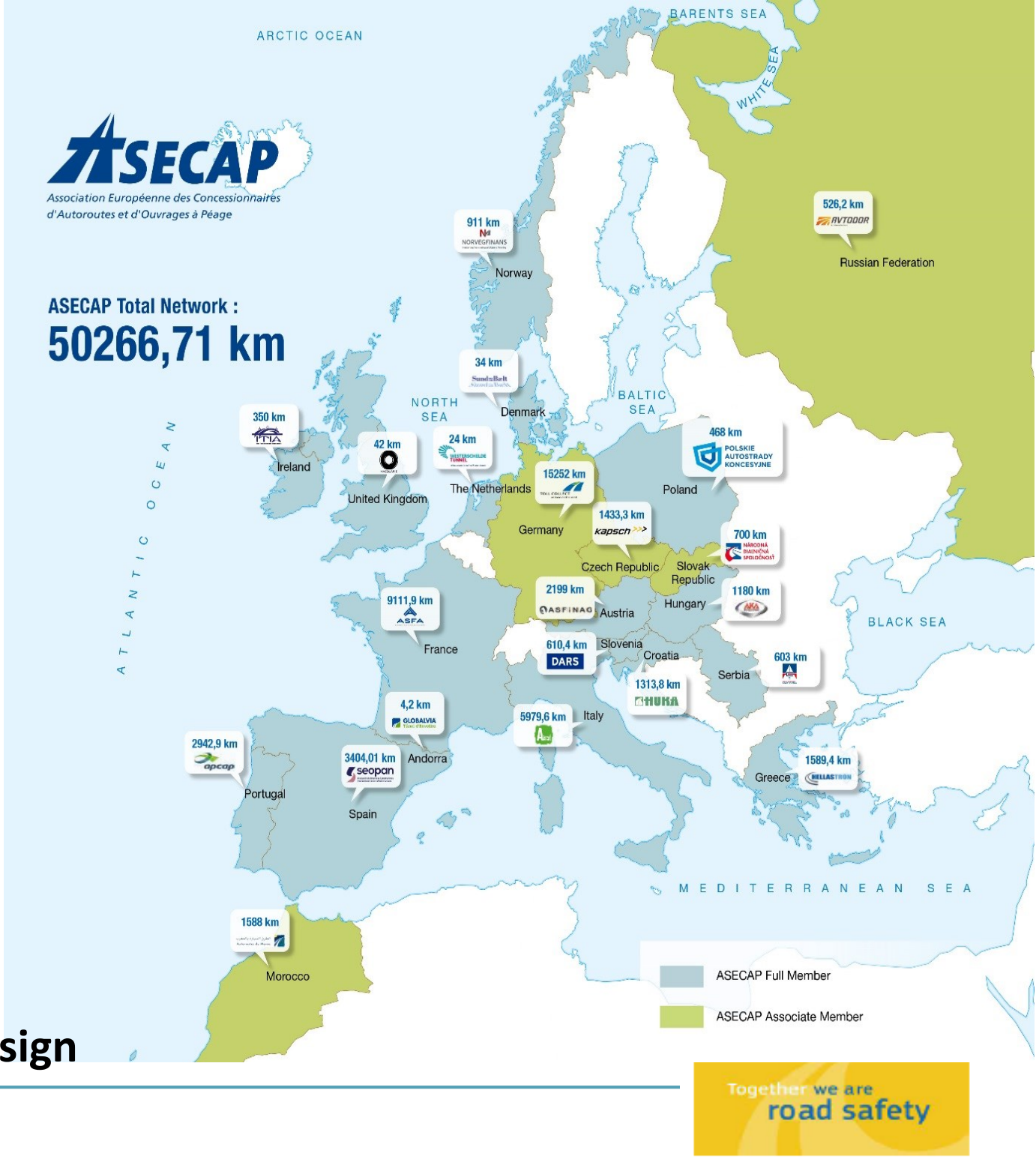
0,23 % fatality per 100 million kilometers driven (2016)

- 4,3% per year lives saved per year

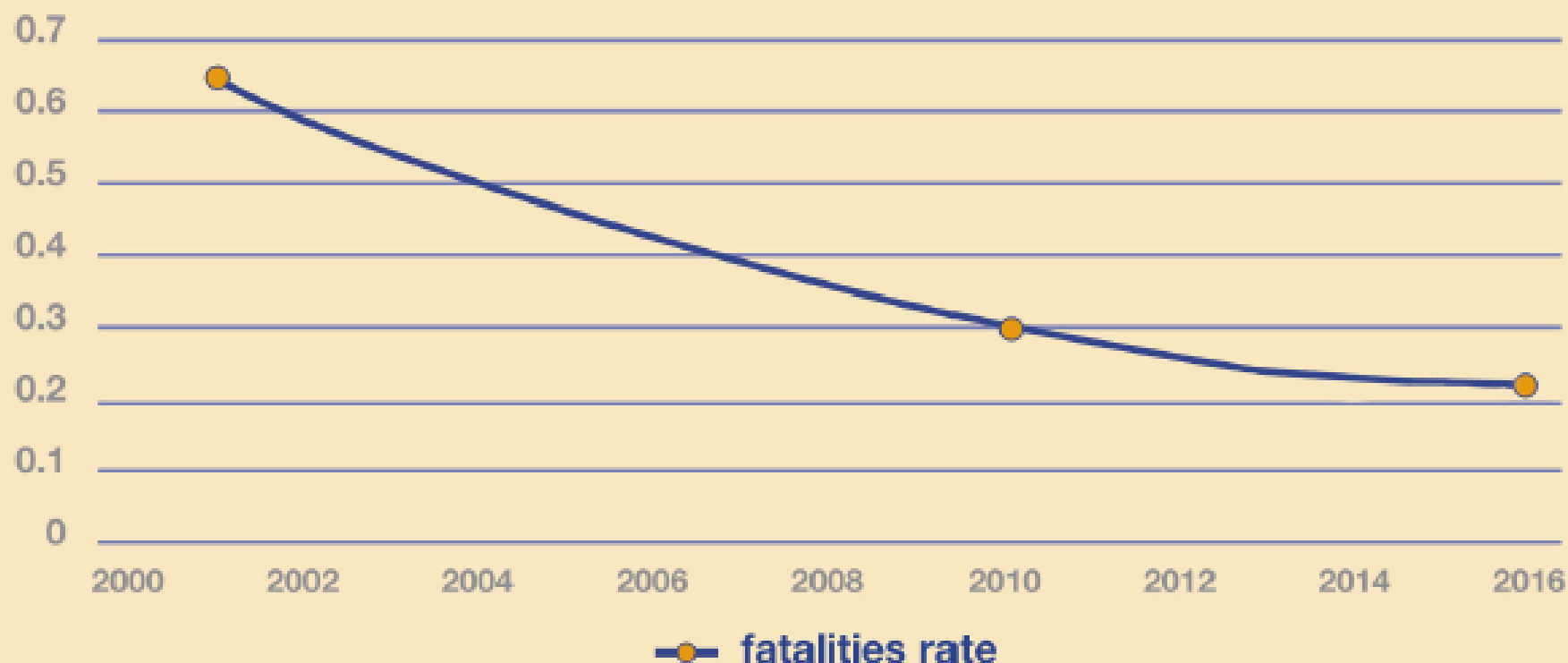
**Tolled motorways are the safest road**

The risk of getting killed three to six times lower than other roads.

**Result of high investments for proper standards in road design and good maintenance.**



## ASECAP Members fatality-rate



	2001	2010	2016
Number of fatalities	1129	755	445
Fatality rate	0.65	0.30	0.23

**Fatality rate divided by 3 since 2001**

# Main accident causes on motorway

Fatigue  
drowsiness



Alcohol



Excessive speed



Pedestrian walking on  
motorway



Bad distances  
Between vehicle



Wrong way driving



Not wearing safety-  
belt



**DISTRACTION WITH MOBILE PHONE IS INCREASING EVERYWHERE**

**A SPECIFIC MOTORWAY OPERATOR CONCERN : STAFF SAFETY**

Together we are  
road safety

# STILL ROOM FOR IMPROVEMENTS

## interaction between

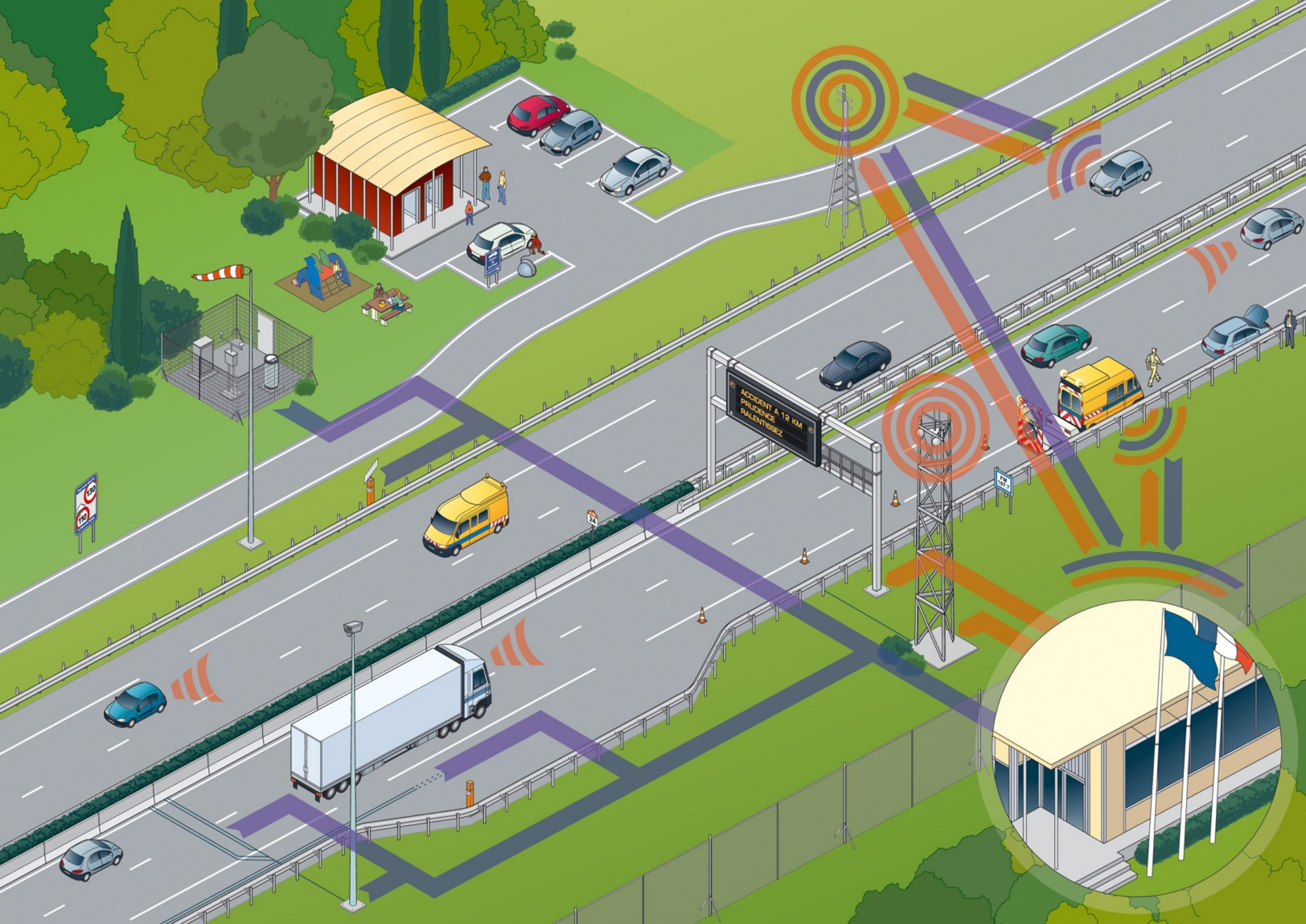
- the infrastructure,
- the vehicle
- the driver.



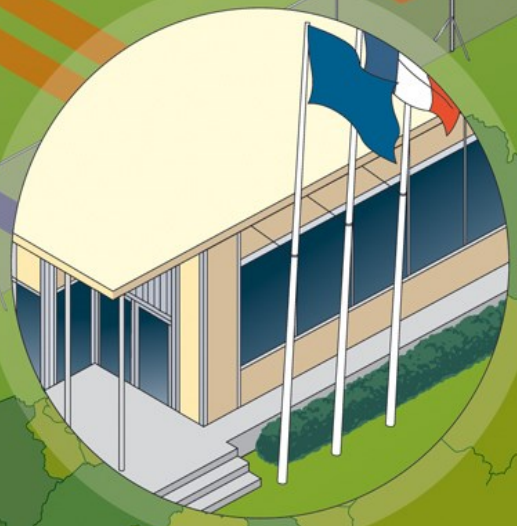
Increasing road safety requires acting on the three pillars of this road safety triangle

# Autonomous vehicle will help the driver but will need a good infrastructure





ACCIDENT A 12 KM  
PRUDENCE  
RALENTISSEZ





# Well maintained infrastructure key issue to welcome autonomous vehicle & new mobility services

- Motorway operators have deployed ITS and continue to enhance innovative application to improve safety
- Earmarked tolls are the most effective way to improve road safety.
- Tolls regimes allow a constant and sustainable flow of resources to maintain the motorway network road safety.



# Permanent action to raise public awareness



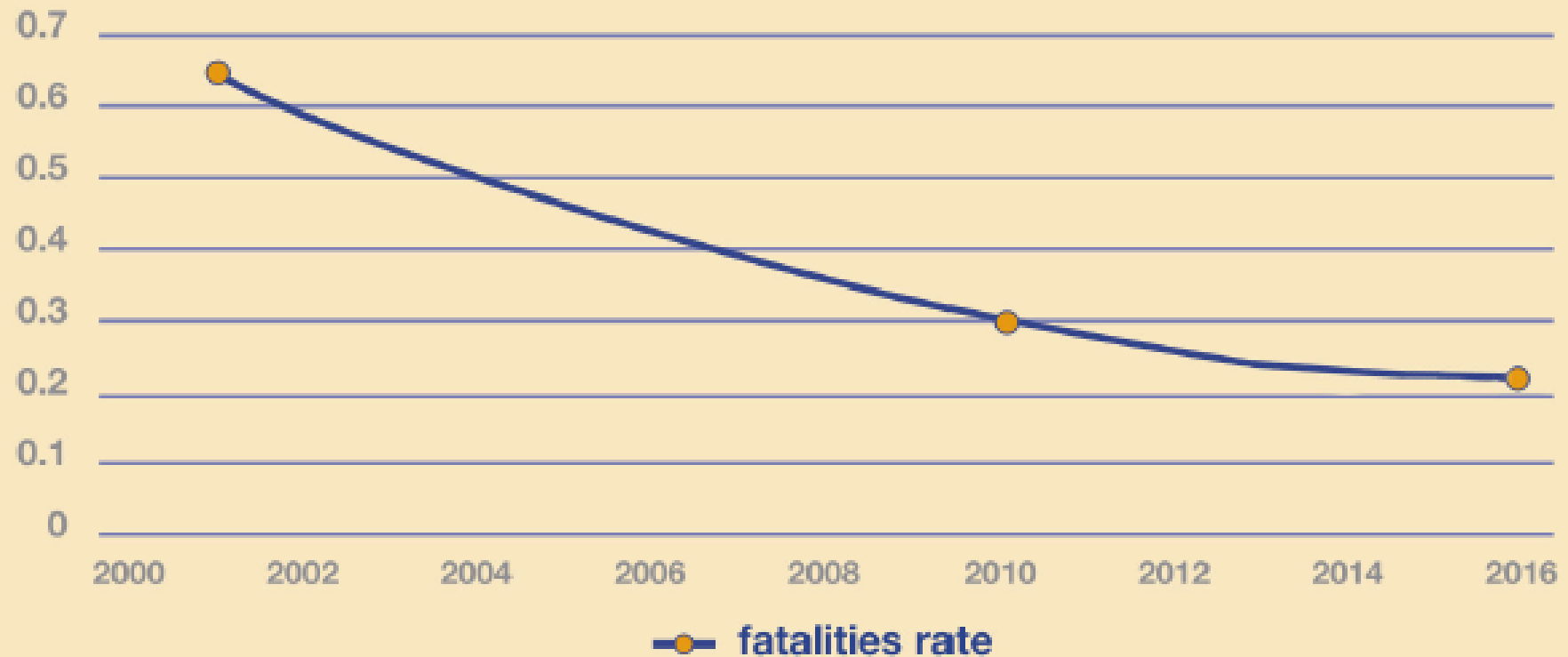
Our staff is taking care of you  
And you ?

**Lets-drive**  
**differently.com**



Together we are  
**road safety**

## ASECAP Members fatality-rate



	2001	2010	2016
Number of fatalities	1129	755	445
Fatality rate	0.65	0.30	0.23

**Fatality rate divided by 3 since 2001**



**Thank you for your attention**

**[Malika.seddi@autoroutes.fr](mailto:Malika.seddi@autoroutes.fr)**

**Coper 2 Chair**

